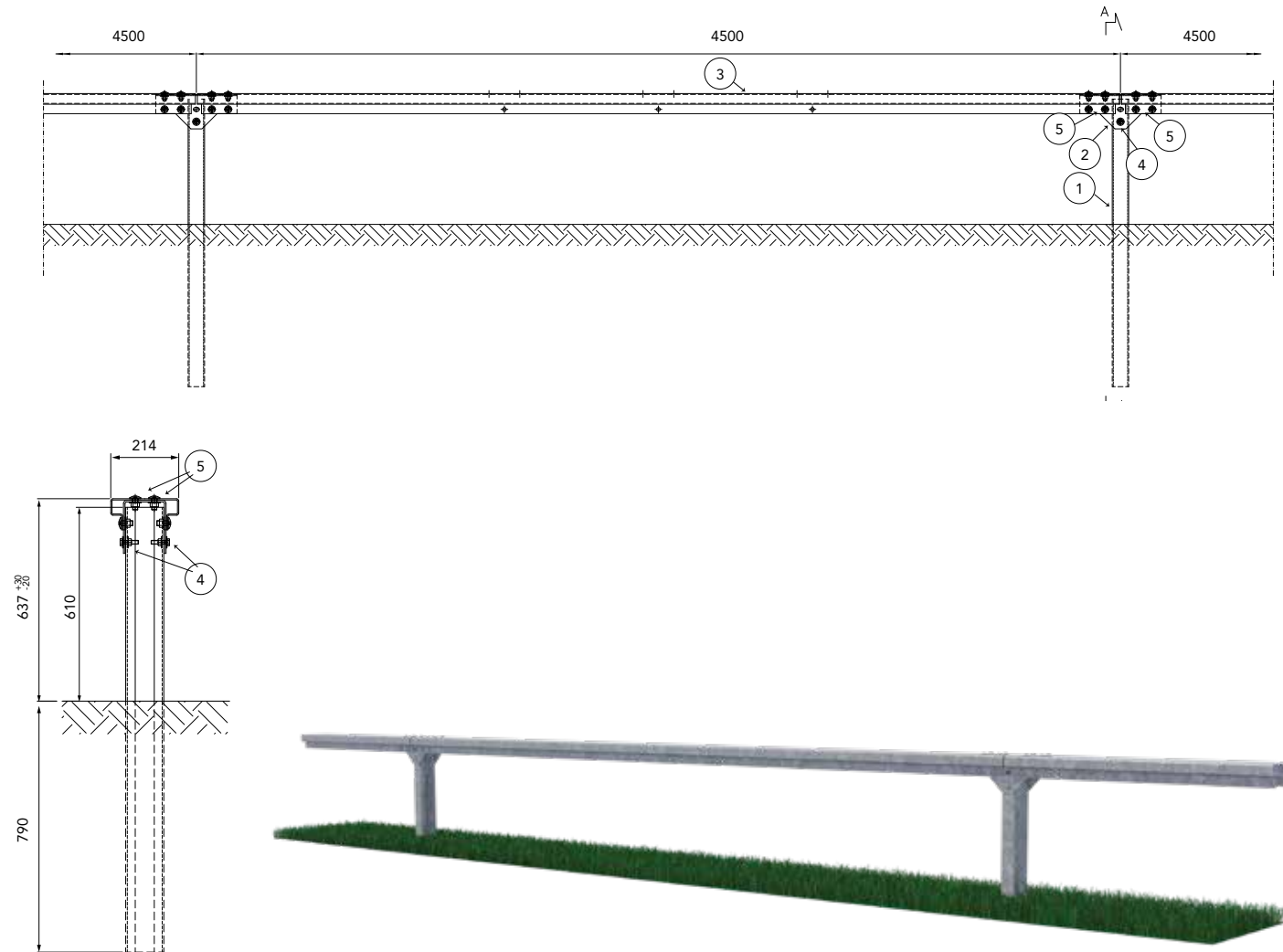


KLASSE L1 DOBBELSIDIG W4

Class L1 Double sided W4



Egenskaper Characteristics

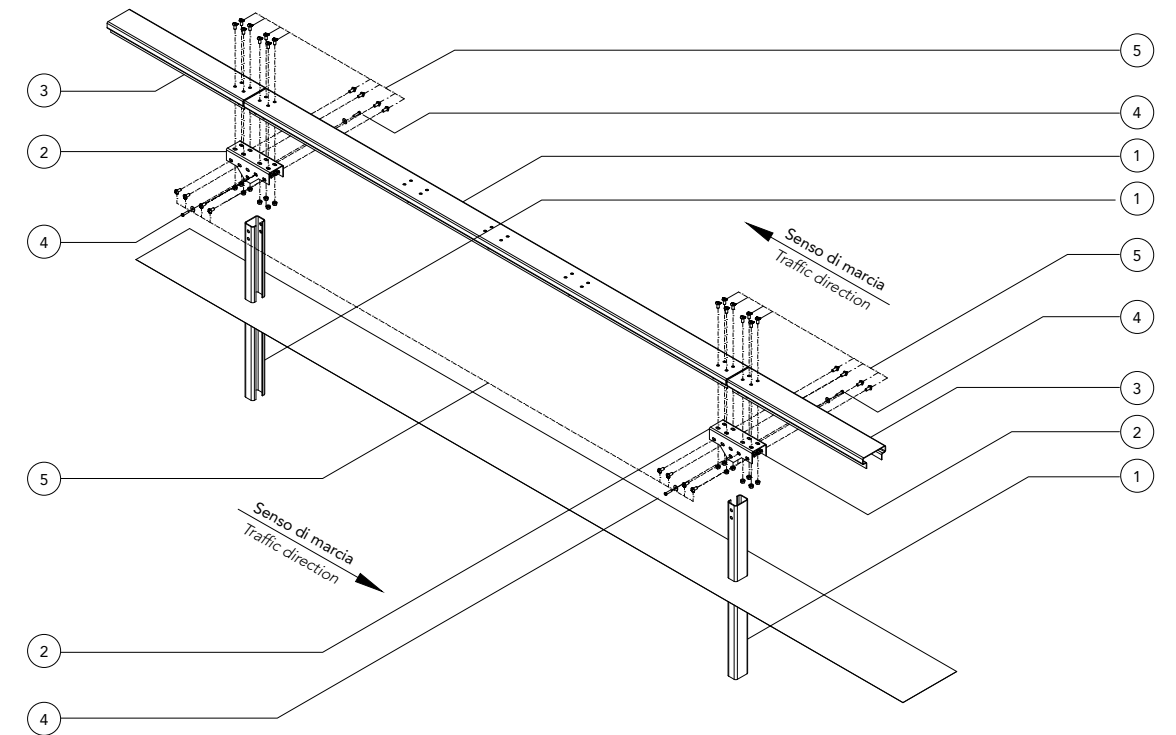
Høyde over bakkenivå <i>Height above ground level</i>	637 mm
Penetreringsdybde <i>Depth of penetration</i>	790 mm
Totalbredde <i>Overall width</i>	214 mm
Stangavstand <i>Post spacing</i>	4500 mm

Krasjtestrappporter Crash test reports

Test n.	Fasilitet	Test	Type	Barrirelengde MTL	Masse kg	Hastighet km/h	ASI max 1.4	THIV max 33 km/h	D m	Vi m	W m
PRØVE 2499	Aisico	TB42	Side 15°	72	10000	70			1,2	2,1=VI6	1,3=W4
PRØVE 2451	Aisico	TB32	Side 20°	72	1500	110	0,8=A	23	1,1		1,2=W4
PRØVE 2520	Aisico	TB11	Side 20°	72	900	100	1,0=A	26	0,8		0,9=W3

L1 DS BOX

W4



Komponenter Components

	Beskrivelse Description	Materiale Material
5	Bolt med mutter og skive <i>Bolt with nut and washer</i>	M16x35 mm
4		M12x50 mm
3	Øvre T-bjelke <i>Upper T-beam</i>	L=4490 mm
2	U-profil for bjelketilkobling <i>U-profile for beam connection</i>	134x169 L=396 mm
1	C-stolpe <i>C-post</i>	120x80x30 Th=5 mm H=1400